



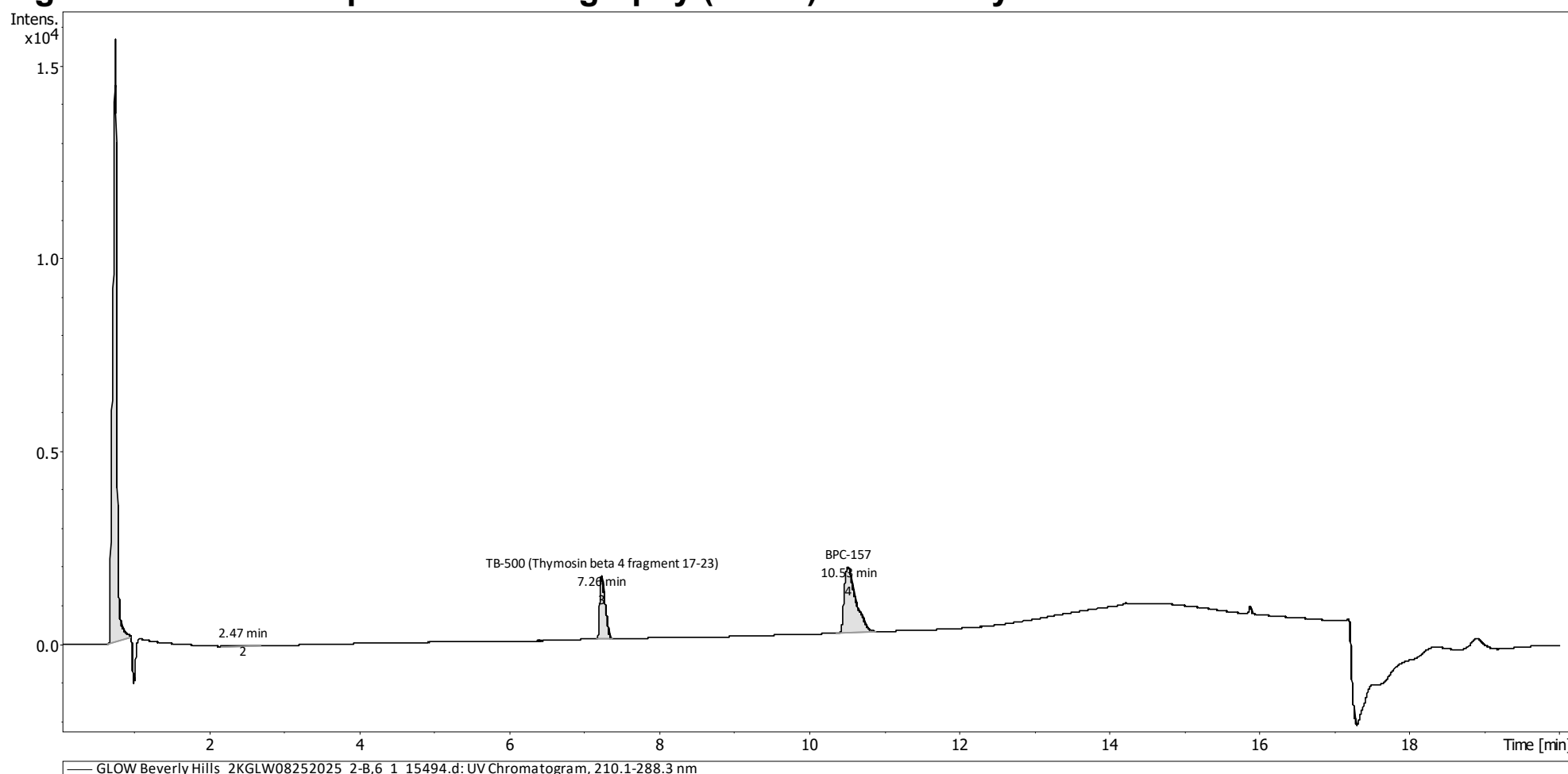
MZ Biolabs  
2102 N Country Club Rd  
Tucson, AZ 85716  
[contact@mzbiolabs.com](mailto:contact@mzbiolabs.com)  
[www.mzbiolabs.com](http://www.mzbiolabs.com)

# Certificate of Analysis

Glow (GHK-Cu, BPC-157, TB-500(Frag 17-23))

**Compounds** : GHK-Cu,BPC-157,TB500(Frag 17-23) **Client** : LARP LLC  
**Lot number** : 2KGLW08252025  
**Analysis date** : 2026-04-09  
**Purity %** : 99.57%  
**GHK Copper** : 60.61 mg  
**BPC-157** : 16.18 mg  
**TB-500** : 15.4 mg  
**Method** : HPLC-UV-MS

## High Performance Liquid Chromatography (HPLC) UV – Purity Test



PEAK LIST		Number of detected peaks: 4		
	Time (min)	Area	%Area	
1	0.79	5.83E+04	68.65	GHK-Cu
2	2.47	3.62E+02	0.43	
3	7.26	8.29E+03	9.76	TB-500
4	10.53	1.80E+04	21.16	BPC-157

**Overall Purity : 99.57**

### Quantification by HPLC-UV

GHK-Cu measured quantity : 60.61 mg/vial  
BPC-157 measured quantity : 16.18 mg/vial  
TB-500 measured quantity : 15.4 mg/vial

Note: Injectable peptides may contain salts and sugars to aid in solubility and act as pH buffers. These are not normally detected using UV and are not considered impurities.

Analysis Performed by  
Ken Pendarvis, ChE  
Analytical Chemist  
MZ Biolabs  
[contact@mzbiolabs.com](mailto:contact@mzbiolabs.com)

2026-04-09



MZ Biolabs  
2102 N Country Club Rd  
Tucson, AZ 85716  
[contact@mzbiolabs.com](mailto:contact@mzbiolabs.com)  
[www.mzbiolabs.com](http://www.mzbiolabs.com)

## Glow (GHK-Cu, BPC-157, TB-500(Frag 17-23))

### Mass Spectrometry (MS) – Identity Test

#### Identity confirmed using HPLC-MS

Molecular weight calculated using monoisotopic m/z values from mass spectrum

#### GHK-Cu PubChem CID: 71587328

<https://pubchem.ncbi.nlm.nih.gov/compound/71587328>

Expected monoisotopic mass : 402.10 Da

Measured monoisotopic mass : 402.10 Da

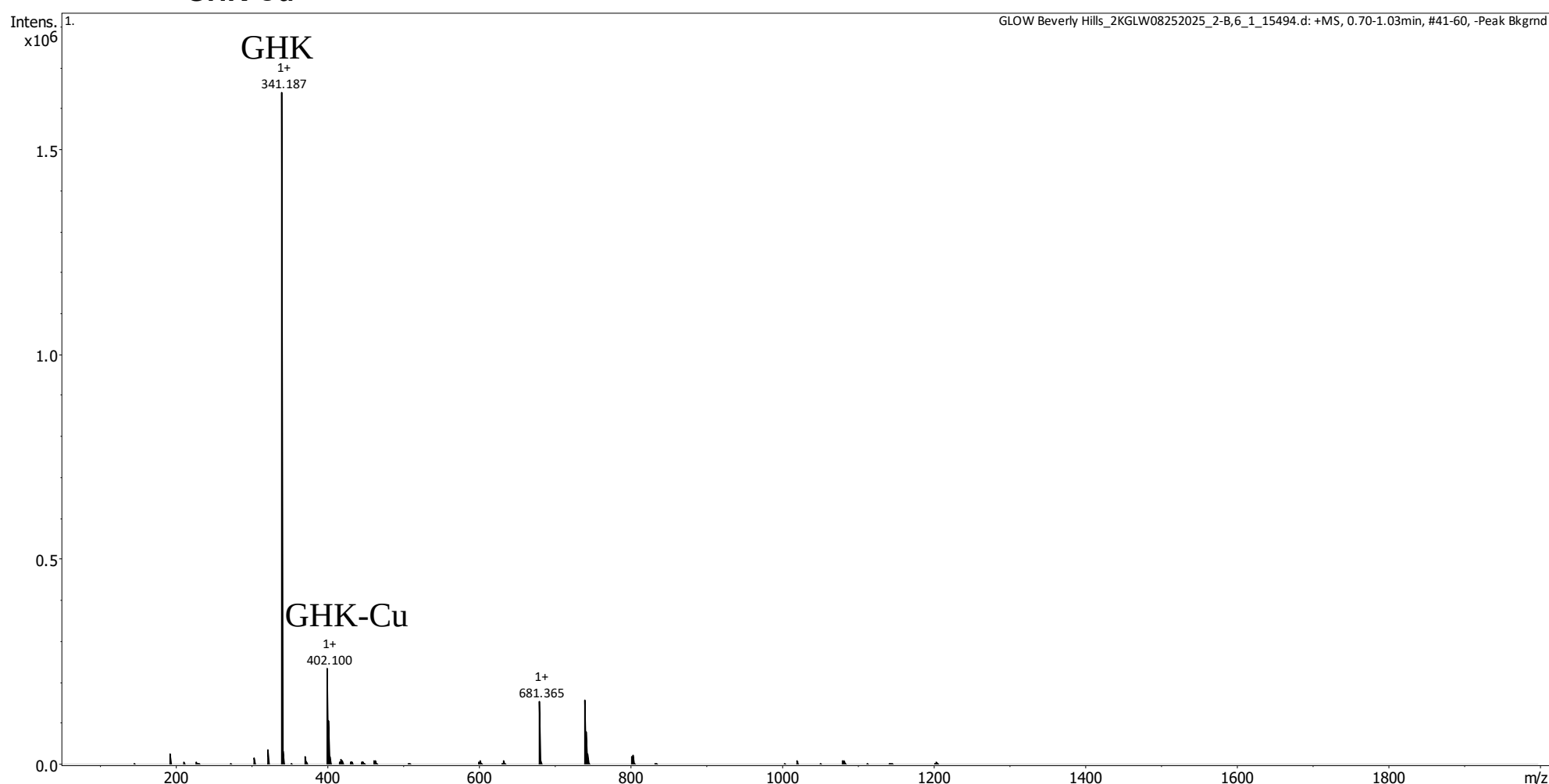
**Molecular weight confirmed**

Note : Monoisotopic m/z values are not easily seen in full spectrum view for larger molecules and peptides.

The dominant isotopic peak (base peak) shown in the spectrum below can be used to approximate the average molecular weight frequently reported by vendors and databases as a secondary means of confirmation.

Recorded MS spectrum

#### GHK-Cu



Analysis Performed by  
Ken Pendarvis, ChE  
Analytical Chemist  
MZ Biolabs  
[contact@mzbiolabs.com](mailto:contact@mzbiolabs.com)

2026-04-09



MZ Biolabs  
2102 N Country Club Rd  
Tucson, AZ 85716  
[contact@mzbiolabs.com](mailto:contact@mzbiolabs.com)  
[www.mzbiolabs.com](http://www.mzbiolabs.com)

## Glow (GHK-Cu, BPC-157, TB-500(Frag 17-23))

### Mass Spectrometry (MS) – Identity Test

#### Identity confirmed using HPLC-MS

Molecular weight calculated using monoisotopic m/z values from mass spectrum

#### BPC-157 PubChem CID: 9941957

<https://pubchem.ncbi.nlm.nih.gov/compound/9941957>

Expected monoisotopic mass : 1418.70 Da

Measured monoisotopic mass : 1418.68 Da

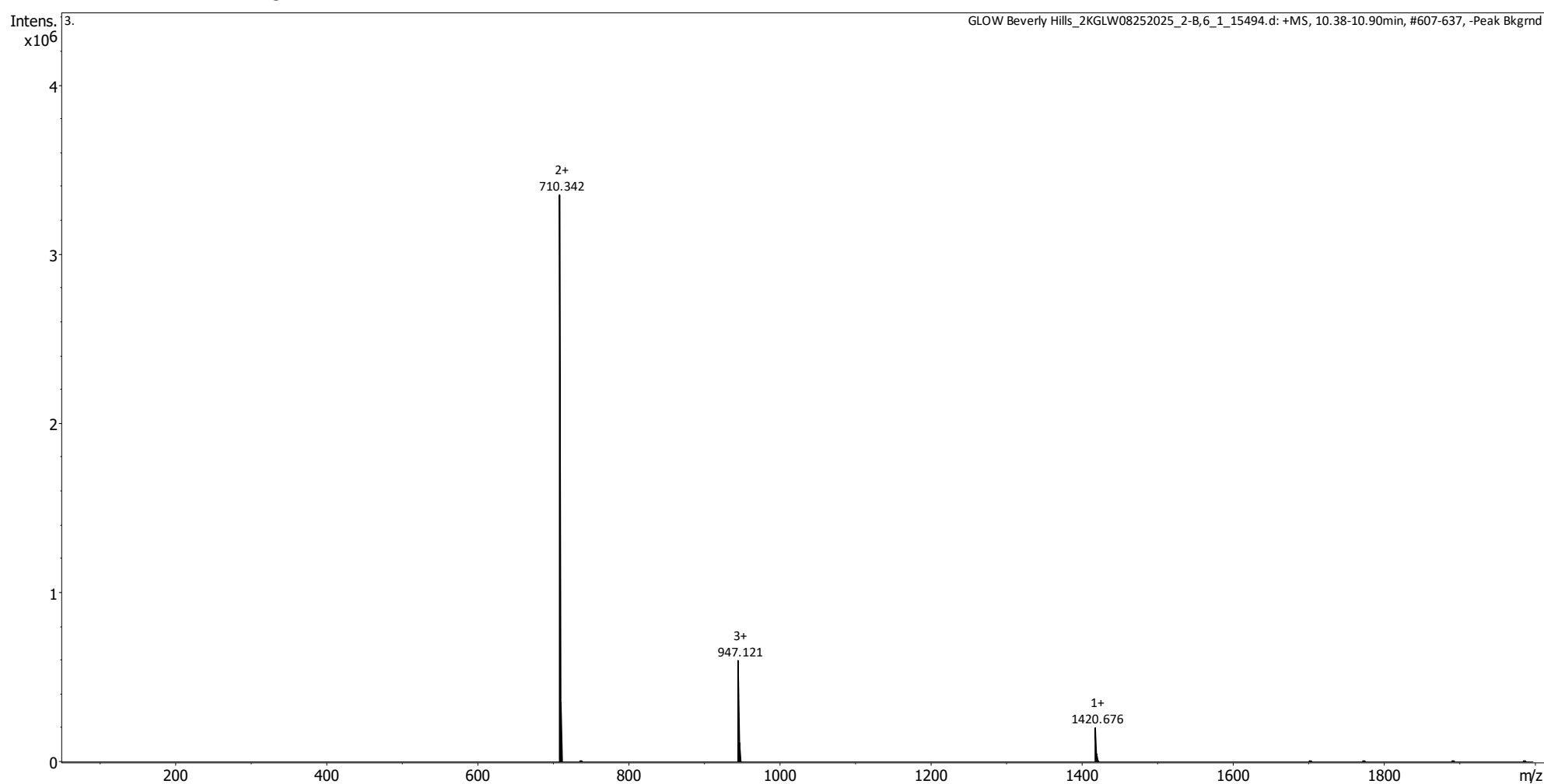
**Molecular weight confirmed**

Note : Monoisotopic m/z values are not easily seen in full spectrum view for larger molecules and peptides.

The dominant isotopic peak (base peak) shown in the spectrum below can be used to approximate the average molecular weight frequently reported by vendors and databases as a secondary means of confirmation.

Recorded MS spectrum

#### BPC-157



Analysis Performed by  
Ken Pendarvis, ChE  
Analytical Chemist  
MZ Biolabs  
[contact@mzbiolabs.com](mailto:contact@mzbiolabs.com)

2026-04-09



MZ Biolabs  
2102 N Country Club Rd  
Tucson, AZ 85716  
[contact@mzbiolabs.com](mailto:contact@mzbiolabs.com)  
[www.mzbiolabs.com](http://www.mzbiolabs.com)

## Glow (GHK-Cu, BPC-157, TB-500(Frag 17-23))

### Mass Spectrometry (MS) – Identity Test

#### Identity confirmed using HPLC-MS

Molecular weight calculated using monoisotopic m/z values from mass spectrum

#### TB-500 PubChem CID: 62707662

<https://pubchem.ncbi.nlm.nih.gov/compound/62707662>

Expected monoisotopic mass : 888.49 Da

Measured monoisotopic mass : 888.49 Da

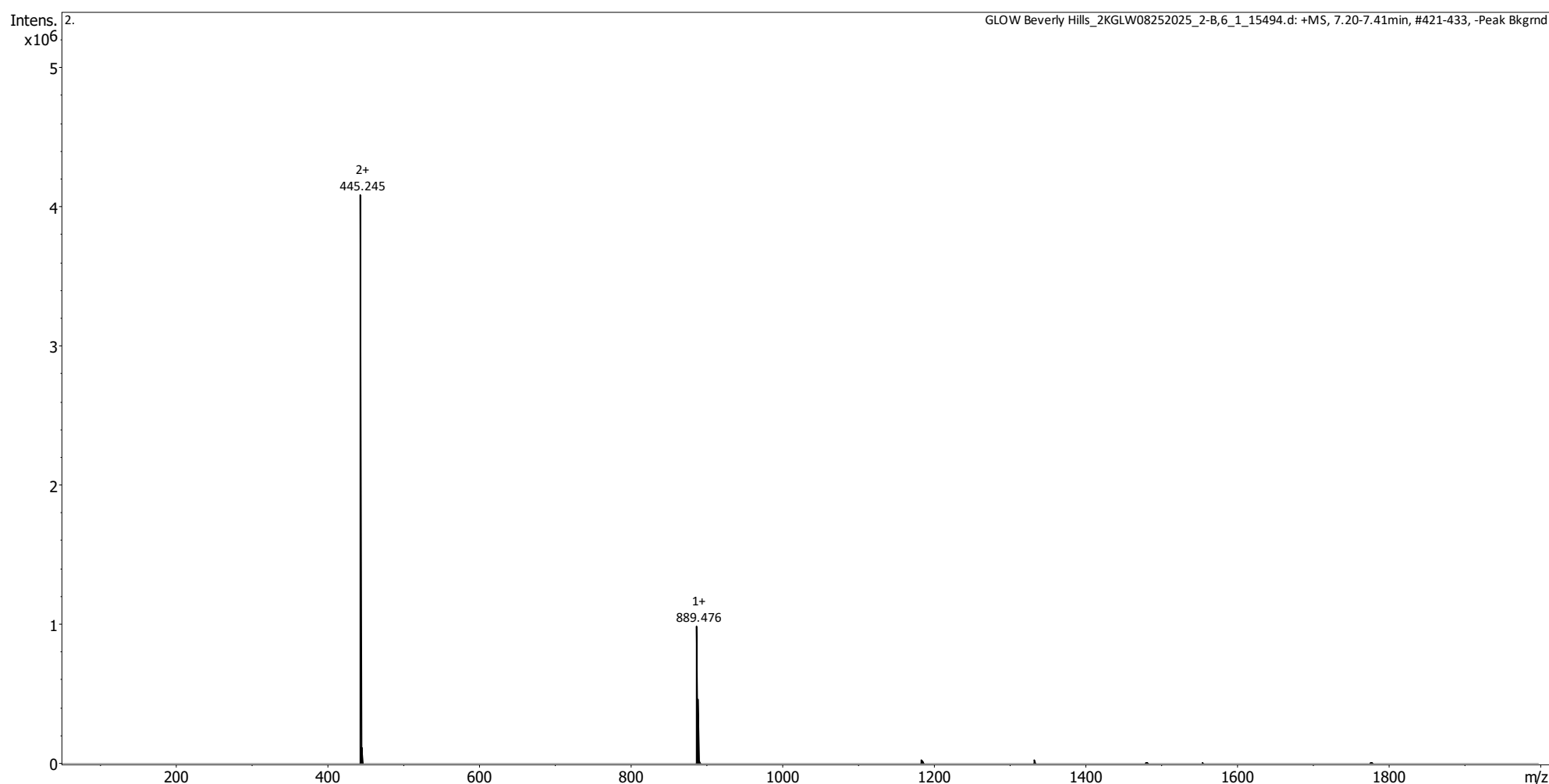
**Molecular weight confirmed**

Note : Monoisotopic m/z values are not easily seen in full spectrum view for larger molecules and peptides.

The dominant isotopic peak (base peak) shown in the spectrum below can be used to approximate the average molecular weight frequently reported by vendors and databases as a secondary means of confirmation.

Recorded MS spectrum

#### TB-500



Analysis Performed by  
Ken Pendarvis, ChE  
Analytical Chemist  
MZ Biolabs  
[contact@mzbiolabs.com](mailto:contact@mzbiolabs.com)

2026-04-09