



MZ Biolabs
2102 N Country Club Rd
Tucson, AZ 85716
contact@mzbiolabs.com
www.mzbiolabs.com

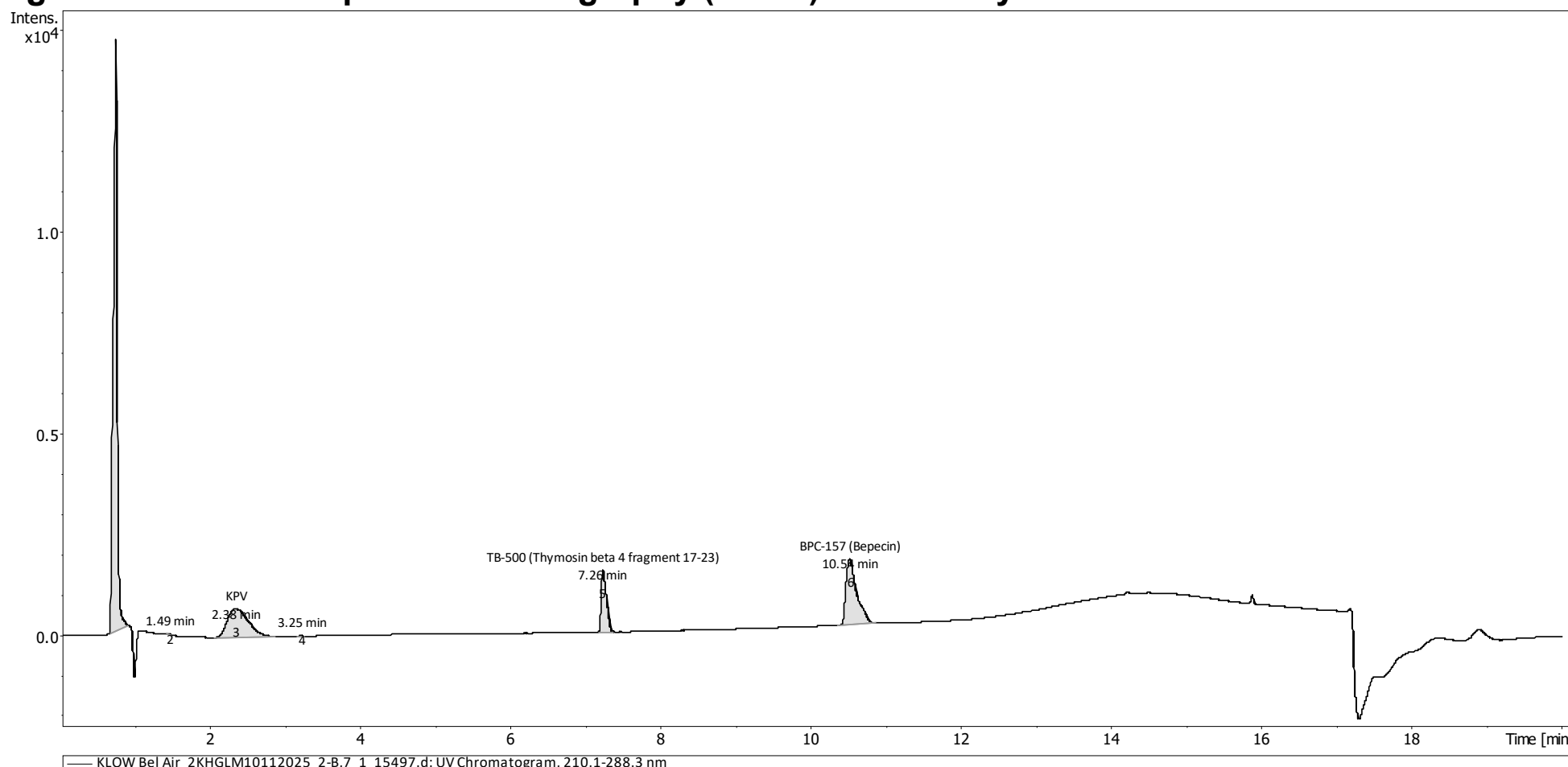
Certificate of Analysis

KLOW (GHK-Cu, BPC-157, TB-500, KPV)

Compounds : GHK-Cu, BPC-157, TB-500, KPV
Lot number : 2KHGLM10112025
Analysis date : 2026-04-09
Purity % : 73.80%
GHK Copper : 57.3 mg
BPC-157 : 14.63 mg
TB-500 : 13.4 mg
KPV : 14.17 mg
Method : HPLC-UV-MS

Client : LARP LLC

High Performance Liquid Chromatography (HPLC) UV – Purity Test



PEAK LIST		Number of detected peaks: 6		
	Time (min)	Area	%Area	
1	0.79	5.35E+04	58.81	GHK-Cu
2	1.49	6.67E+01	0.07	
3	2.38	1.37E+04	15.04	KPV
4	3.25	4.74E+01	0.05	
5	7.26	7.34E+03	8.07	TB-500
6	10.54	1.63E+04	17.95	BPC-157

Overall Purity : 99.87

GHK-Cu measured quantity : 57.3 mg/vial
BPC-157 measured quantity : 14.63 mg/vial
TB-500 measured quantity : 13.4 mg/vial
KPV measured quantity : 14.17 mg/vial

Note: Injectable peptides may contain salts and sugars to aid in solubility and act as pH buffers. These are not normally detected using UV and are not considered impurities.

Analysis Performed by
Ken Pendarvis, ChE
Analytical Chemist
MZ Biolabs
contact@mzbiolabs.com

2026-04-09



MZ Biolabs
2102 N Country Club Rd
Tucson, AZ 85716
contact@mzbiolabs.com
www.mzbiolabs.com

KLOW (GHK-Cu, BPC-157, TB-500, KPV)

Mass Spectrometry (MS) – Identity Test

Identity confirmed using HPLC-MS

Molecular weight calculated using monoisotopic m/z values from mass spectrum

GHK-Cu PubChem CID: 71587328

<https://pubchem.ncbi.nlm.nih.gov/compound/71587328>

Expected monoisotopic mass : 402.10 Da

Measured monoisotopic mass : 402.09 Da

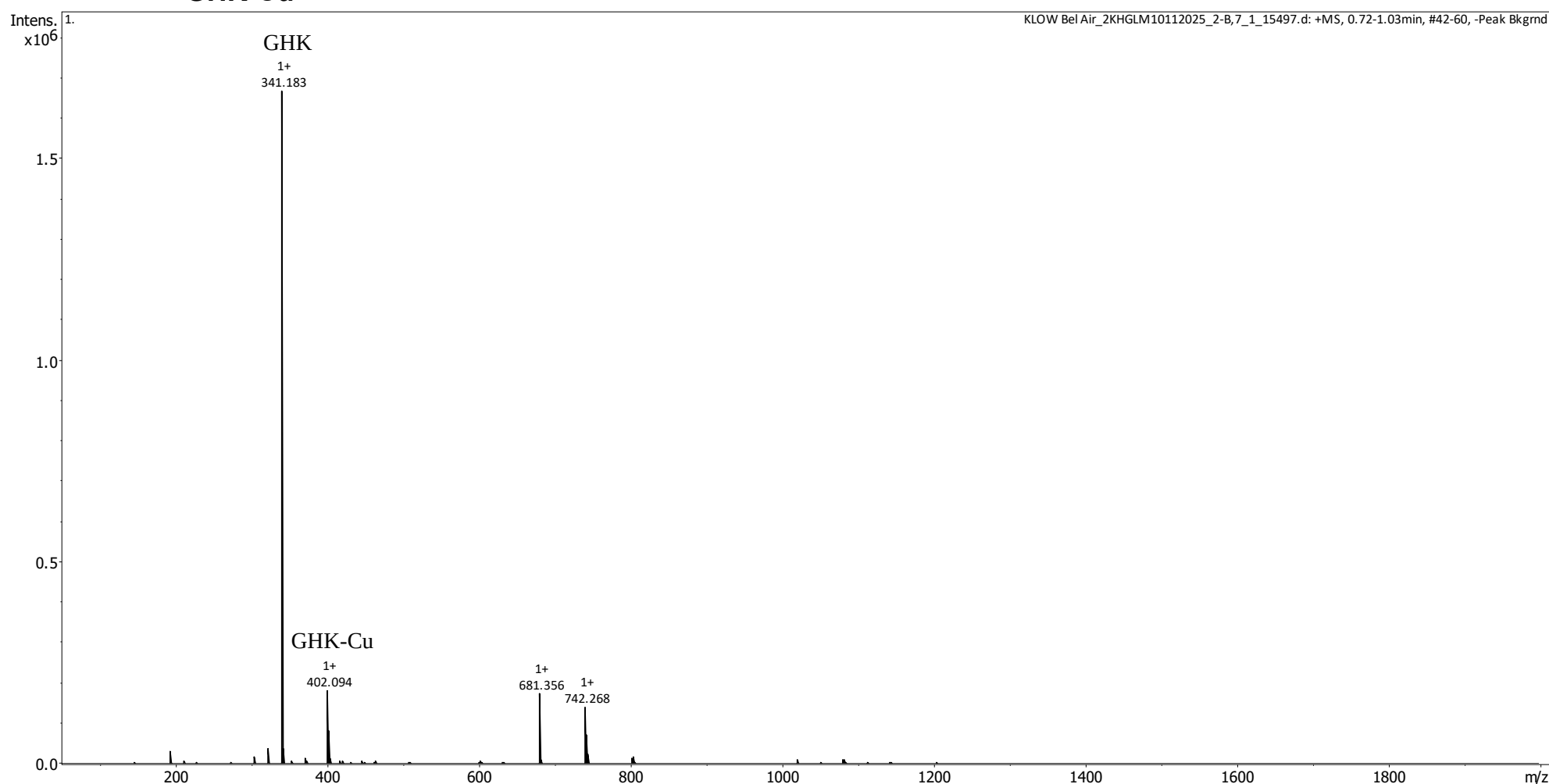
Molecular weight confirmed

Note : Monoisotopic m/z values are not easily seen in full spectrum view for larger molecules and peptides.

The dominant isotopic peak (base peak) shown in the spectrum below can be used to approximate the average molecular weight frequently reported by vendors and databases as a secondary means of confirmation.

Recorded MS spectrum

GHK-Cu



Analysis Performed by
Ken Pendarvis, ChE
Analytical Chemist
MZ Biolabs
contact@mzbiolabs.com

2026-04-09



MZ Biolabs
2102 N Country Club Rd
Tucson, AZ 85716
contact@mzbiolabs.com
www.mzbiolabs.com

KLOW (GHK-Cu, BPC-157, TB-500, KPV)

Mass Spectrometry (MS) – Identity Test

Identity confirmed using HPLC-MS

Molecular weight calculated using monoisotopic m/z values from mass spectrum

BPC-157 PubChem CID: 9941957

<https://pubchem.ncbi.nlm.nih.gov/compound/9941957>

Expected monoisotopic mass : 1418.70 Da

Measured monoisotopic mass : 1418.68 Da

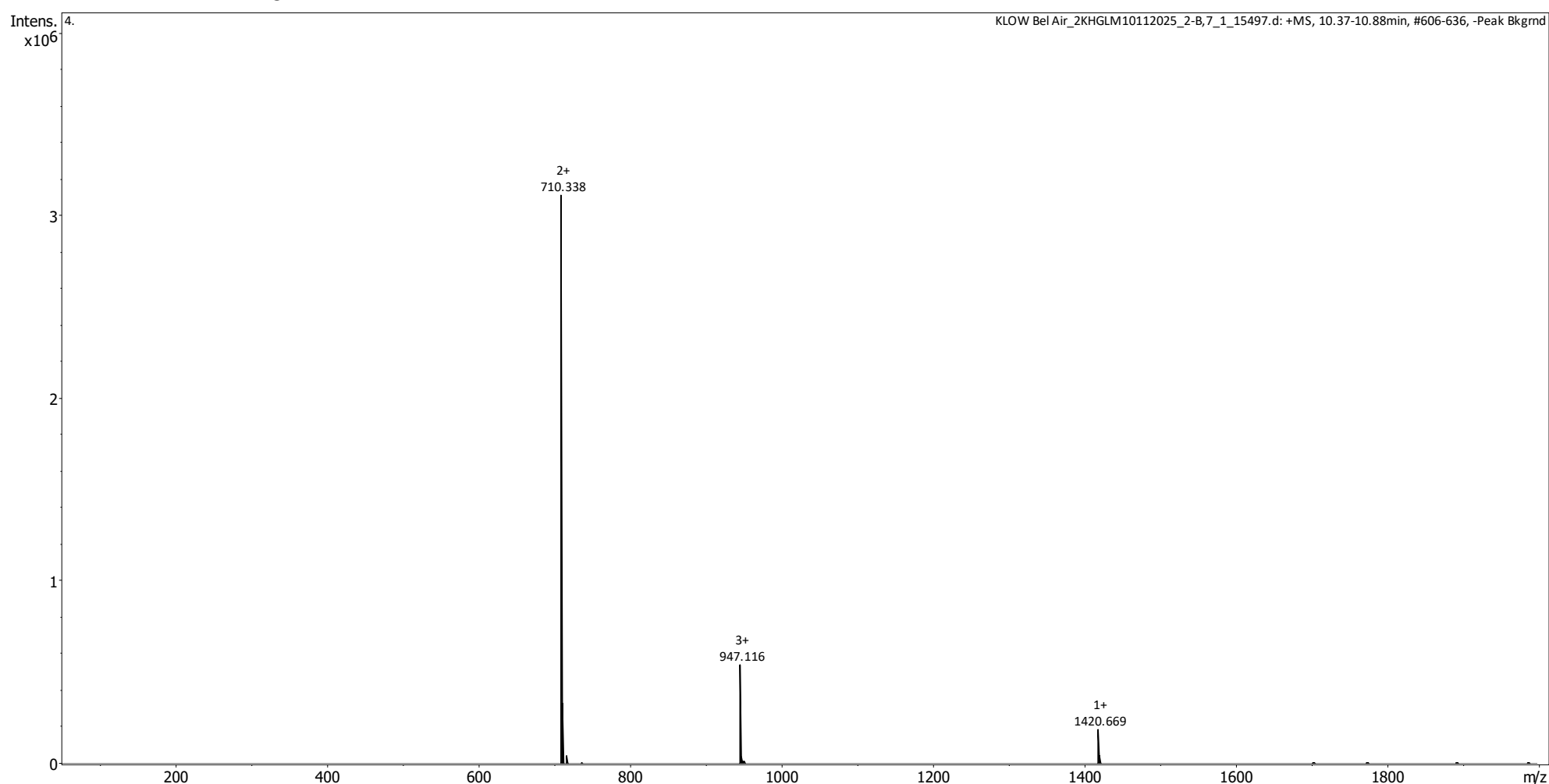
Molecular weight confirmed

Note : Monoisotopic m/z values are not easily seen in full spectrum view for larger molecules and peptides.

The dominant isotopic peak (base peak) shown in the spectrum below can be used to approximate the average molecular weight frequently reported by vendors and databases as a secondary means of confirmation.

Recorded MS spectrum

BPC-157



Analysis Performed by
Ken Pendarvis, ChE
Analytical Chemist
MZ Biolabs
contact@mzbiolabs.com

2026-04-09



MZ Biolabs
2102 N Country Club Rd
Tucson, AZ 85716
contact@mzbiolabs.com
www.mzbiolabs.com

KLOW (GHK-Cu, BPC-157, TB-500, KPV)

Mass Spectrometry (MS) – Identity Test

Identity confirmed using HPLC-MS

Molecular weight calculated using monoisotopic m/z values from mass spectrum

TB-500 PubChem CID: 62707662

<https://pubchem.ncbi.nlm.nih.gov/compound/62707662>

Expected monoisotopic mass : 888.49 Da

Measured monoisotopic mass : 888.48 Da

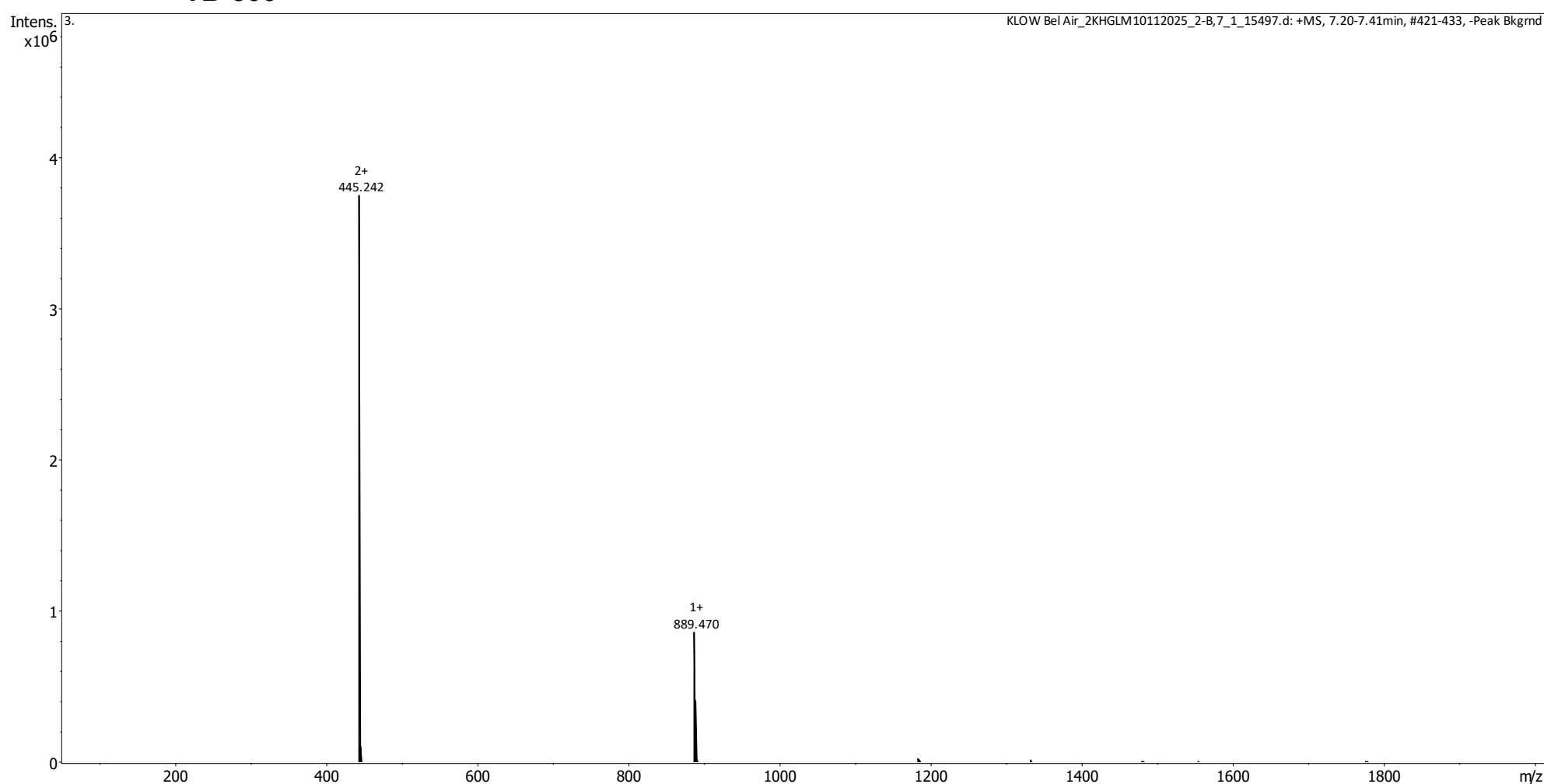
Molecular weight confirmed

Note : Monoisotopic m/z values are not easily seen in full spectrum view for larger molecules and peptides.

The dominant isotopic peak (base peak) shown in the spectrum below can be used to approximate the average molecular weight frequently reported by vendors and databases as a secondary means of confirmation.

Recorded MS spectrum

TB-500



Analysis Performed by
Ken Pendarvis, ChE
Analytical Chemist
MZ Biolabs
contact@mzbiolabs.com

2026-04-09



MZ Biolabs
2102 N Country Club Rd
Tucson, AZ 85716
contact@mzbiolabs.com
www.mzbiolabs.com

KLOW (GHK-Cu, BPC-157, TB-500, KPV)

Mass Spectrometry (MS) – Identity Test

Identity confirmed using HPLC-MS

Molecular weight calculated using monoisotopic m/z values from mass spectrum

KPV PubChem CID : 125672

<https://pubchem.ncbi.nlm.nih.gov/compound/125672>

Expected monoisotopic mass : 342.23 Da

Measured monoisotopic mass : 342.22 Da

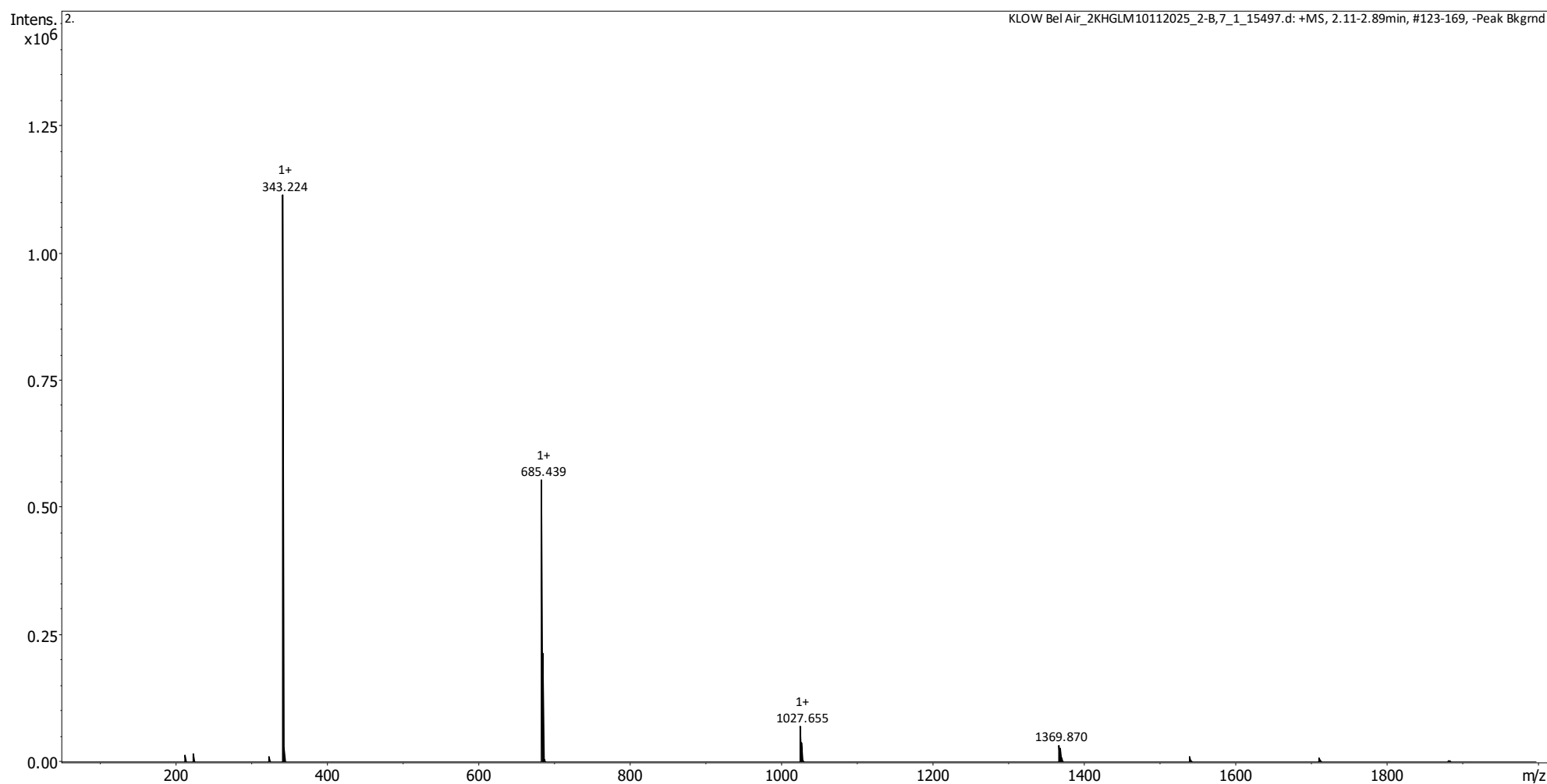
Molecular weight confirmed

Note : Monoisotopic m/z values are not easily seen in full spectrum view for larger molecules and peptides.

The dominant isotopic peak (base peak) shown in the spectrum below can be used to approximate the average molecular weight frequently reported by vendors and databases as a secondary means of confirmation.

Recorded MS spectrum

KPV



Analysis Performed by
Ken Pendarvis, ChE
Analytical Chemist
MZ Biolabs
contact@mzbiolabs.com

2026-04-09