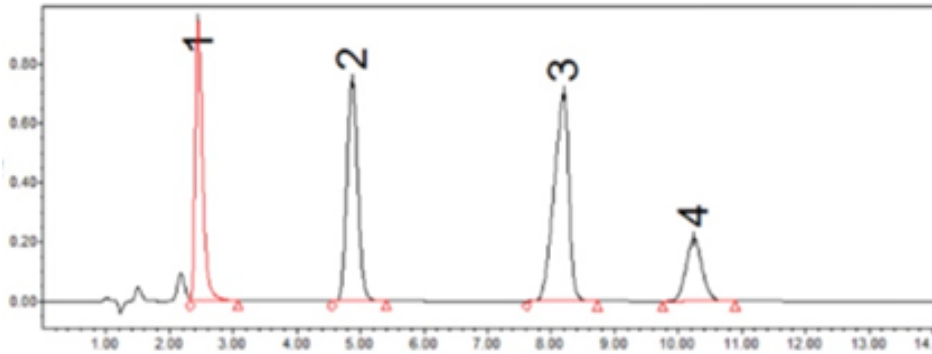


Certificate of Analysis

Product Name: KLOW (GHK-CU 50mg., BPC-157 10mg, TB-500 10mg, KPV 10mg)

HPLC:



Peak 1: KPV
Peak 2: GHK-CU
Peak 3: TB 500
Peak 4: BPC-157

MW: 403.9g/mol (GHK-CU), 1419.55g/mol (BPC-157), 889.02g/mol (TB 500), 342.43 g/mol (KPV)

CAS: 89030-95-5 (GHK-CU), 137525-51-0 (BPC-157), 884340-08-9 (TB-500), 67727-97-3 (KPV)

Batch Number: 2KHGLM10112025

Manufacture Date: 10/11/2025 **Expiration Date:** 02/01/2028 **Client:** LARP LLC

Specifications:

Parameter	Specification	Results	Method
Appearance	White Luophilized Powder	Conforms	Observation
Content	GHKCU, BPC, TB-500, KPV	80mg	Q-TOF LC/MS
Solubility in Water	Clear transparent	Conforms	Observation
Peptide Purity (HPLC)	≥98.0%	99.5%	Waters 2489 HPLC
Mass Spectrometry	403, 1418, 889, 342 g/mol	Conforms	Q-TOF LC/MS
Assay/Content	≥95.0%	99.5%	Q-TOF LC/MS
Other Amino Acids	Not detectable/≤1%	ND	Q-TOF LC/MS
pH	4 to 7	6.0	pH meter
Endotoxin Analysis/EU	≤1EU/mL	0.076EU/mL Conforms	Chromogenic LAL Assay

Conclusion: This batch meets all quality control specifications for release as detailed above.

Edwin Hoag

Edwin Hoag MD PhD 10/25/2025